

## Human Reproduction and Development Worksheet

1. Label the following diagram of the human reproductive system.

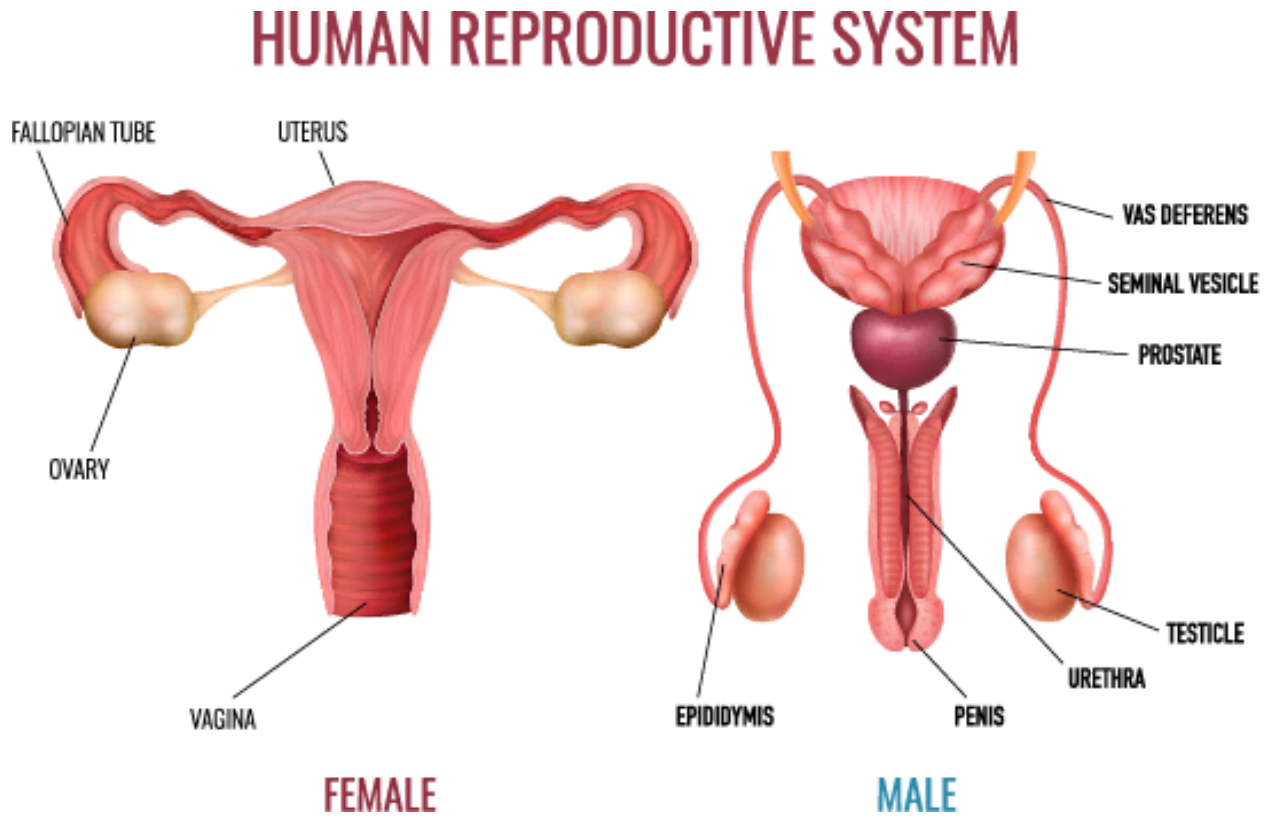


Image: macrovector (Adobe Stock Photo)

epididymus	prostate	uterus
fallopian tube	seminal vesicle	vagina
ovary	testicle	vas deferens
penis head	urethra	

2. Match the terms from the list below to the descriptions.

<b>Term</b>	<b>Description</b>
<i>ovary</i>	produce eggs and secrete estrogen
<i>fallopian tube</i>	connects the ovaries to the uterus
<i>vas deferens</i>	transport sperm from the epididymus to the urethra
<i>testes</i>	produce sperm and secrete testosterone
<i>uterus</i>	where a fetus grows and develops until birth
<i>epidymus</i>	store sperm until they leave the body
<i>prostate gland</i>	secrete substances that become part of semen
<i>vagina</i>	provides a passageway for a baby to leave the mother's body during birth

epididymus	prostate	uterus
fallopian tube	seminal vesicle	vagina
ovary	testicle	vas deferens
penis head	urethra	

3. Match the hormones to the descriptions. Some of the names will be used more than once.

Hormone	Description
<i>FSH</i>	released from the anterior pituitary
<i>estrogen</i>	released from the ovaries
<i>estrogen</i>	responsible for the secondary sexual characteristics of females
<i>testosterone</i>	responsible for the secondary characteristics of males
<i>estrogen</i>	controls the ovarian and menstrual cycle along with FSH, LH, and progesterone

estrogen	follicle stimulating hormone (FSH)	testosterone
----------	------------------------------------	--------------

4. Fill in the blanks with words from the list below. Some may be used more than once, and some words may not be used at all.

Fertilization occurs when the male gamete (sperm cell) fuses with the female gamete (the egg) to produce a zygote. The zygote travels down the fallopian tube towards the uterus. Along the way it divides multiple times and eventually becomes a blastocyst. The blastocyst embeds itself in the lining of the uterus. This process is called implantation and the blastocyst is now called an embryo. As the embryo grows and becomes more complex, specialized cells and tissues start to develop. It also starts to form most organs. At the end of 8 weeks, it is now referred to as a fetus.

blastocyst	fertilization	organs	vagina
embryo	fetus	urethra	vas deferens
fallopian tube	implantation	uterus	zygote